

# advantage

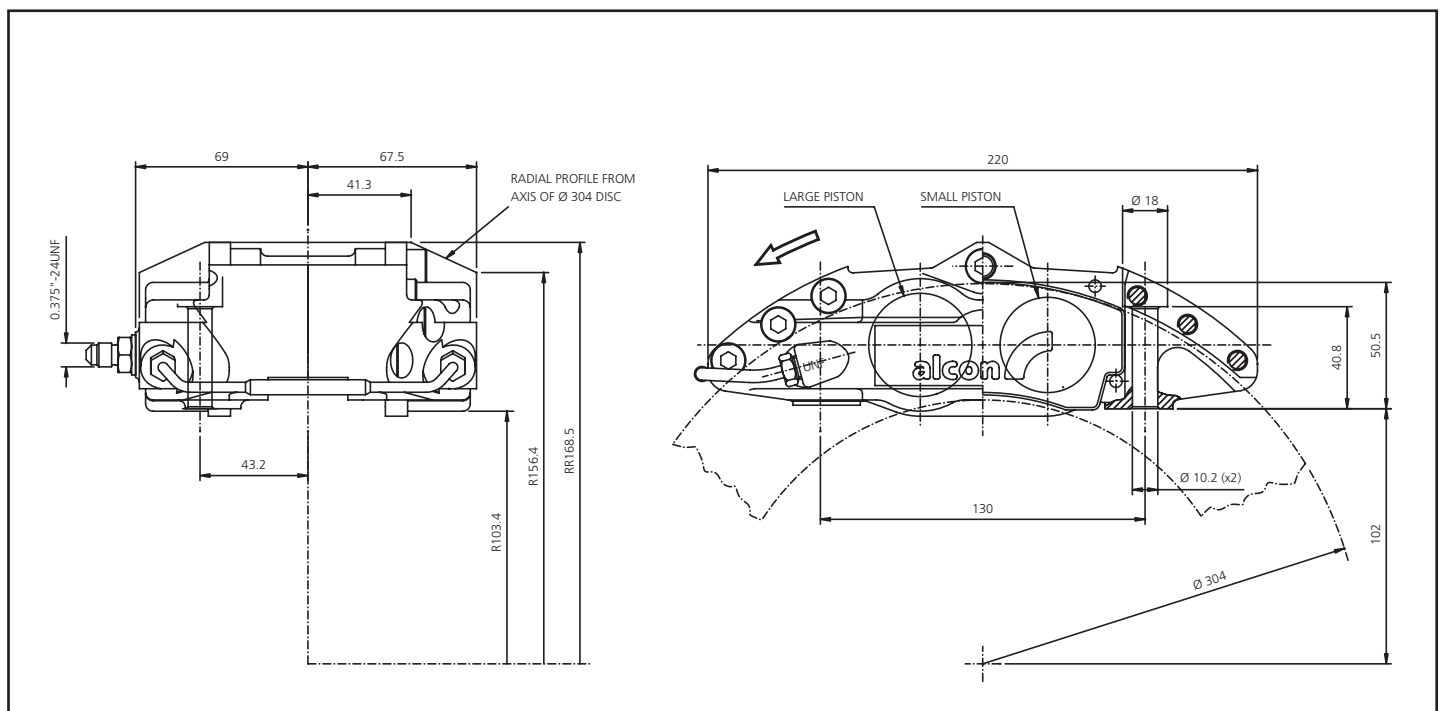
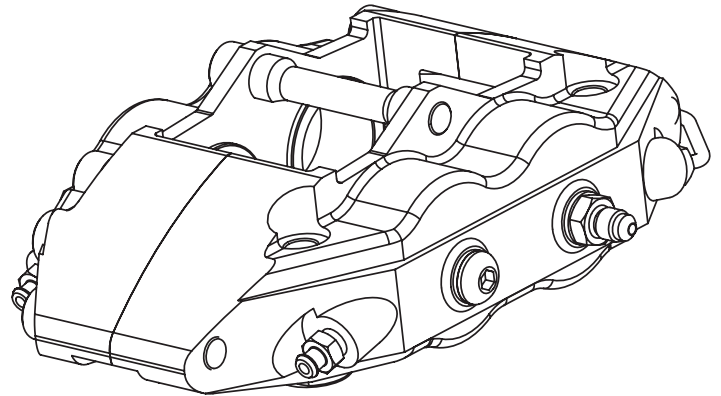
# 4 piston radial mount H-type caliper

### PRODUCT REF

|                   |                   |
|-------------------|-------------------|
| CRH304/28-32/32LL | CRH304/28-38/41LL |
| CRH304/28-32/32RL | CRH304/28-38/41RL |
| CRH304/28-32/32LT | CRH304/28-38/41LT |
| CRH304/28-32/32RT | CRH304/28-38/41RT |

### KEY FEATURES AND BENEFITS

- **Radial mounting for maximum rigidity**  
Firm, consistent pedal
- **Made from aerospace grade aluminium alloy**  
High strength to weight ratio
- **Differential piston diameters**  
Minimises pad taper wear
- **Uses popular H-type pad shape**  
Wide range of friction materials available
- **Pad retaining sleeve**  
High rigidity with straightforward pad changes



| SPECIFICATION      | 32/32                                 | 38/41                                 | PAD SHAPES       |                   |
|--------------------|---------------------------------------|---------------------------------------|------------------|-------------------|
| piston diameter    | 31.8 / 31.8                           | 38.1 / 41.3                           | Alcon            | 4463              |
| disc diameter      | 250-304                               | 250-304                               | Carbone Lorraine | 5007W43 / 5003W48 |
| disc thickness     | 25.4-28                               | 25.4-28                               | Ferodo           | FRP219 / FRP201   |
| caliper weight     | 1.91kg                                | 1.91kg                                | Hawk             | HB107             |
| pad area           | 84cm <sup>2</sup> / 89cm <sup>2</sup> | 84cm <sup>2</sup> / 89cm <sup>2</sup> | Mintex           | MDB1200 / MDB1864 |
| pad thickness      | 16                                    | 16                                    | Pagid            | U1265             |
| seal kit reference | CSK3232E900                           | CSK3841E900                           | SBS              | 3001              |